

# Installing GraphiTech Cutting Diagram

## Remove Prior Versions:

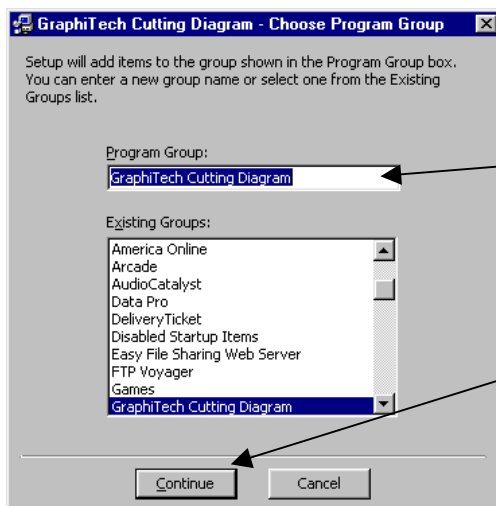
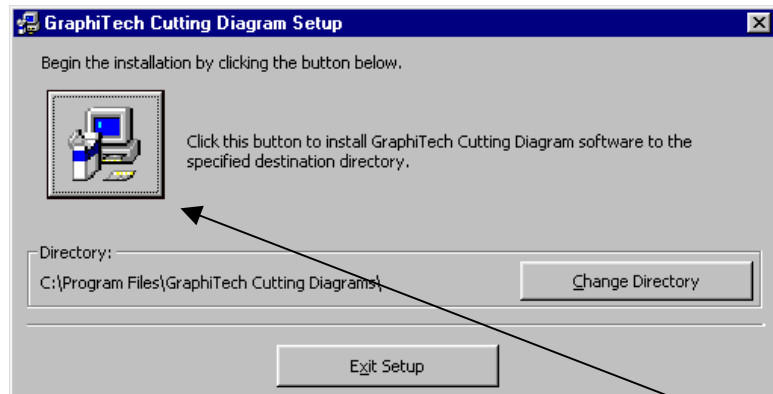
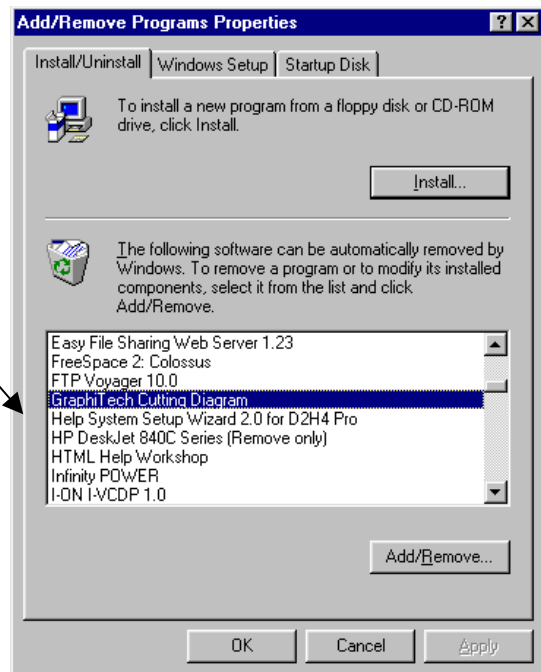
Prior to installing this version, be sure you remove any prior version. This is accomplished by clicking **START**, selecting **SETTINGS** and then **CONTROL PANEL**. Now click on “Add/Remove Programs”. Look for the “**GraphiTech Cutting Diagram**” as shown in the screen display to the right and when highlighted, click on “Add/Remove” button.

## Installing Cutting Diagram:

In order to install the program, you must first either download from the GraphiTech web site ([www.graphitech.com](http://www.graphitech.com) -- then go to *Pricing and Versions*, bottom of page) or retrieve it from the CD update disk.

After unzipping the file (CuttingDiagram.zip) into any convenient folder on your local drive, double-click the *setup.exe* program to begin installation. The following pictorial sequence is what you will see when installing the program.

To start the actual installation, you will first see a screen that requires you to click **OK**. Then the screen



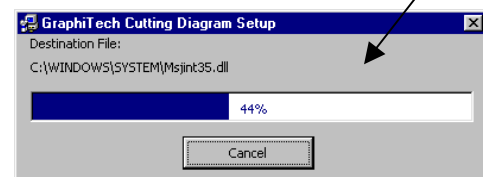
above appears. Here, you must click on the **large icon** to start the loading process.

Once you click the large icon, then you are asked about the **program group** as show to the left. Accept the default information shown by clicking the **Continue** button. If you are asked if you wish to retain existing programs, always say “Yes” and continue. A **progress bar** will show on the screen to indicate how the installation is progressing.

To locate the program after installation, click

**START**, **PROGRAMS**, and scroll until you see the

GraphiTech Cutting Diagram. If you wish to create an icon on the desktop, right click the selection and left click “Create Shortcut.” Then drag shortcut onto the desktop.



# Running the Program

## Starting the Program

You will find the cutting program located in your Start menu. Click Start, Programs and select GraphiTech Cutting...

Once the program is displayed, you may either obtain the license from GraphiTech for unlimited use or you may simply look over the various cutting routines available for the sizes shown in the Finished, Press and Parent sheet sizes.

## Obtaining License

Click Help followed by License. If you already have the product licensed, a warning message will be displayed. Otherwise, the display shown here will be displayed. Click Start and a Key Code will be generated that you must send to GraphiTech in order to obtain the correct password. Once you receive the password, simply request the License again, click Start and enter the password you were provided. Be sure that the same Key Code is displayed that you originally obtained. If not, obtain the latest version from GraphiTech's website, re-install the program and re-request a new code.

## Interfaces

Currently, this product will either operate in a stand-alone configuration or it will interface to GraphiTech's Millennium series of programs. If you are running one of our older Dos programs, the interface for those programs has not been completed as yet. If you wish to search for a quote or job, enter the number and click on search. The data will be filled out from the database.

## General Operation

To start, click the clear button or one of the arrows at the top of the screen. If you wish to set the Gripper, identify the amount of gripper and select either width or depth. Gutter is not implemented as yet. Each time you click on the arrow associated with a layout, you will see a different type of layout. There are as many as 4 different layouts per sheet, depending on the use of dutch or standard cuts.

## Printed Reports

Once you have the desired layout showing on screen, select the Print Layouts command. This report identifies both the Finished sheet on the Press sheet and the Press sheet on the Parent sheet. Also, if the data for the job has been either manually or automatically filled out, that information will also print with the layouts.

