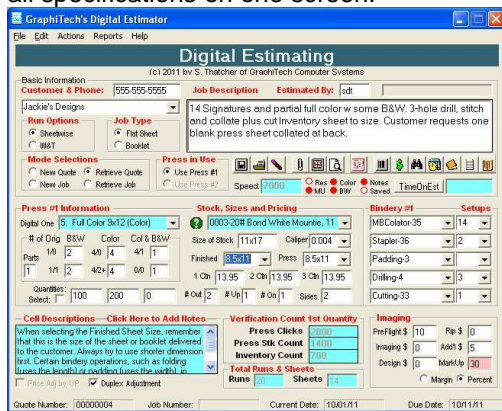


Digital Estimating

From multi-signature books to flyers...

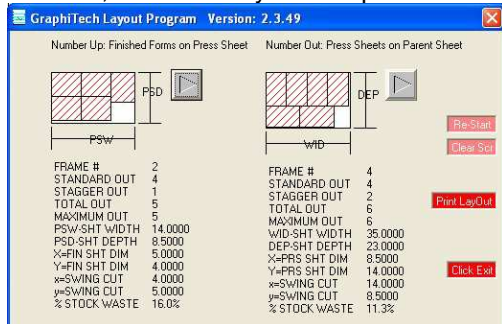
GraphiTech's Digital Estimator has been in the works for over 9 months and has been completely rewritten and is now ready for release! The Price for eBay Customers Only is \$279.

Now you can easily estimate even the most complex digital job using a format that provides all specifications on one screen.



The Worksheet displays everything needed to perform an estimate. And it is so intuitive that some of our Beta testers said they felt right at home using it!

Want to see or print a layout? It's built in. Click a button, select the layout and print it!



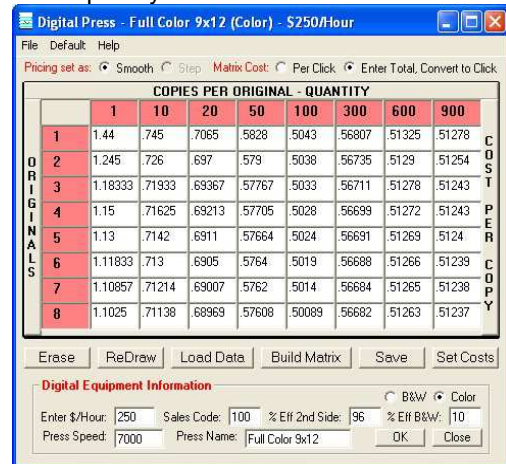
There are over 7 common reports and they are beautiful! Delivery Ticket, Work Order, Job Jacket, Bid, Layout, Worksheet, Time/Cost summary and many more in the works!

This program will even interface with Job Costing and Tracking as well as Invoicing!

Multi-Sheet, Multi-Color signatures are entered by identifying the number of 1/0, 1/1, 4/0, 4/4, 4/1 and 0/0 sigs along with the desired quantity. Select stock from the same database you use now and identify any in-line or off-line bindery operations, again, right from your existing file.

Each cell contains a full description of how to enter data in the blue box lower left.

You can build a full Digital Pricing Matrix for any copier, press, etc., in less than a minute! And once built, all pricing from your Digital Estimator is completely automatic!



Now for the best part!

Click <http://www.graphitech.com/digital.htm>.

Select the version desired and make payment, then select **Download**, Next, enter your name and download the version you wish (XP or Win7/Vista). You have 120 estimates to try it out with a **Full Money Back guarantee**.

Please give it a try. And call me for any help or other information you need with your install. I look forward to your comments.

Scott Thatcher, Pres.

GraphiTech

4174 Larch Ave □ Palm Beach Gardens, FL 33418
Toll Free: 800-634-8324 □ Cell: 561-818-0499